

AMERICAN ORTHOPAEDIC ASSOCIATION

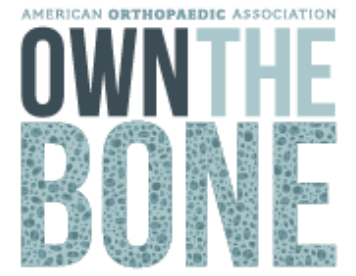
# OWN THE BONE

## Overview of Own The Bone

Cynthia L. Emory,  
MD, MBA, FAOA

# Disclosures

---



- Consulting – Surgical Care Affiliates Physician Development Institute™
- Committees – AOA, RJOS, NCOA, MSTs, SOA
- Board Member – EOA, AAOS Now
- Reviewer – CORR, JSOA

# Objectives

---

- What is Own The Bone?
- Why do we need a Fracture Liaison Service?
- Past state, current state, future state

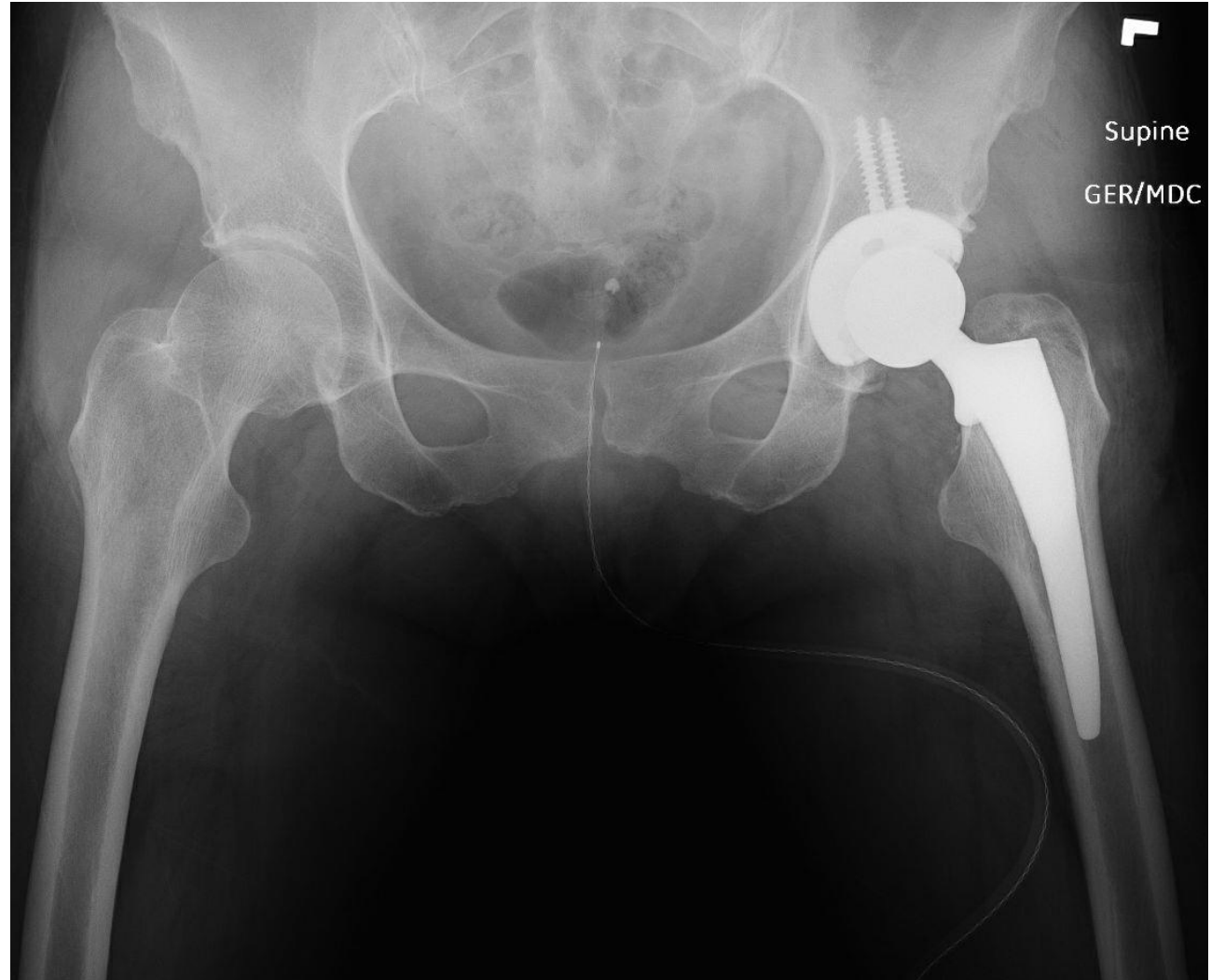
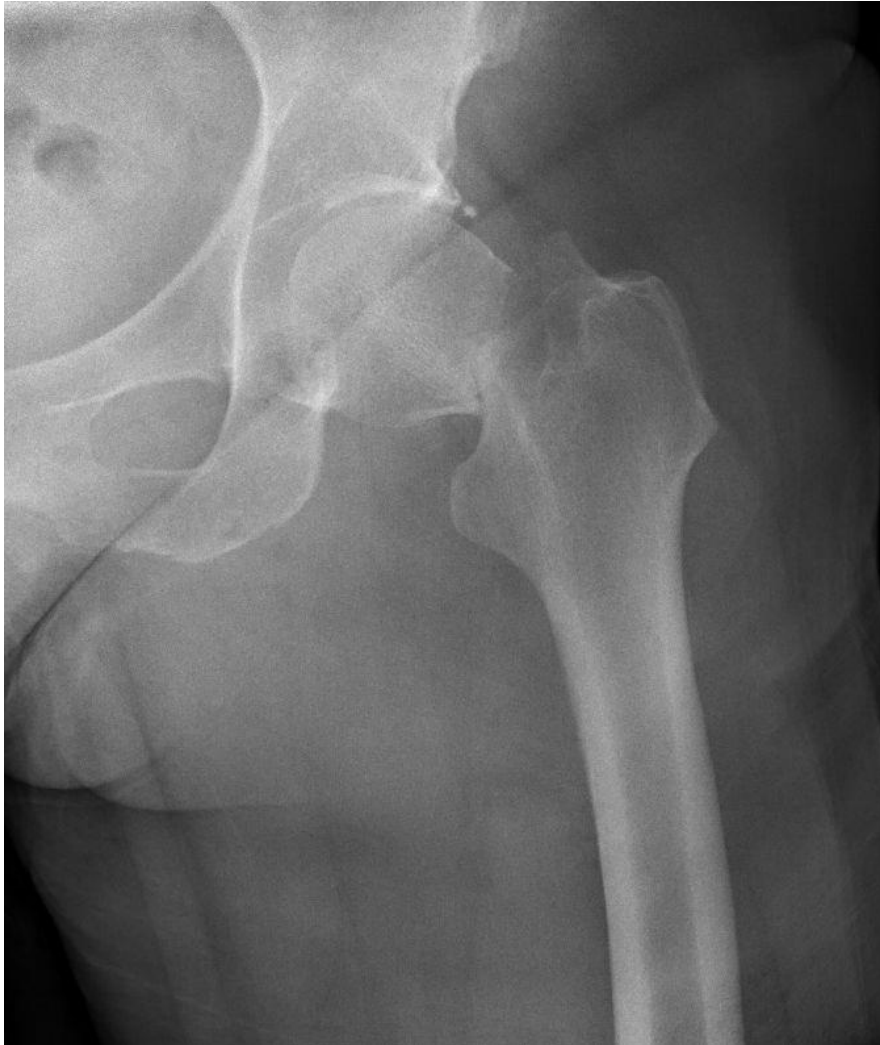
# The Why

---



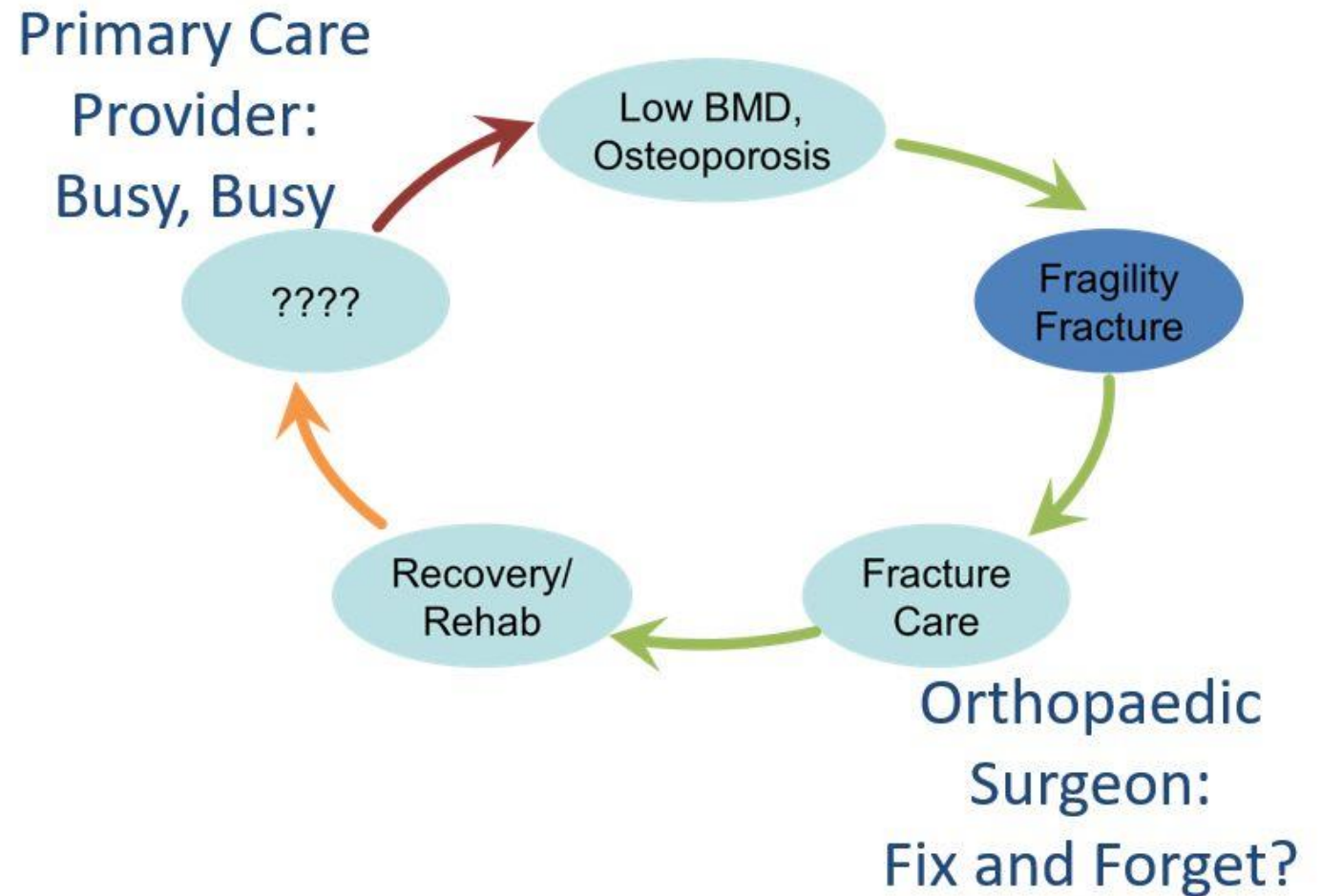
- 2 million fragility fractures this year
  - Most of them will get treatment for the fracture
  - Most of them will not get treatment to prevent another one
- Hip Fractures
  - 25% one-year mortality
  - 40% don't return to previous level of function

# Fragility Fracture Cycle



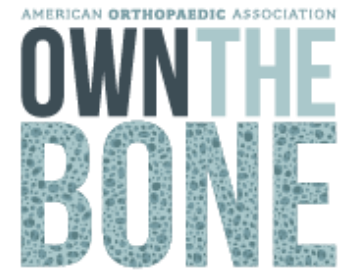
# The Who of the Fragility Fracture Cycle

- PCP – time to address osteoporosis
- Orthopaedics – fracture is fixed
- Endocrine – referral times, compliance
- Post-hospital discharge issues
- Who's responsible?



# The What

---



- Own the Bone
  - Tool to ensure patients get the comprehensive care they need for their bone health
  - Prevent future fractures
  - Establish a bone health program or fracture liaison service (FLS)
  - Launched in 2009
  - Web based registry with over 60,000 patients
  - Nearly 300 members (hospitals, physician groups, health plans)

# Fracture Liaison Service

---

- Multidisciplinary Care
  - Orthopaedics
  - Spine
  - Primary care
  - Therapy
  - Imaging
  - Pharmacy
  - Specialists – endocrine, nephrology, oncology, GI



# Fracture Liaison Service

---

- Business Plan
  - Start up funds & location
  - ROI
  - Ancillary revenue
  - Staffing models
  - Expansion of scope and scale

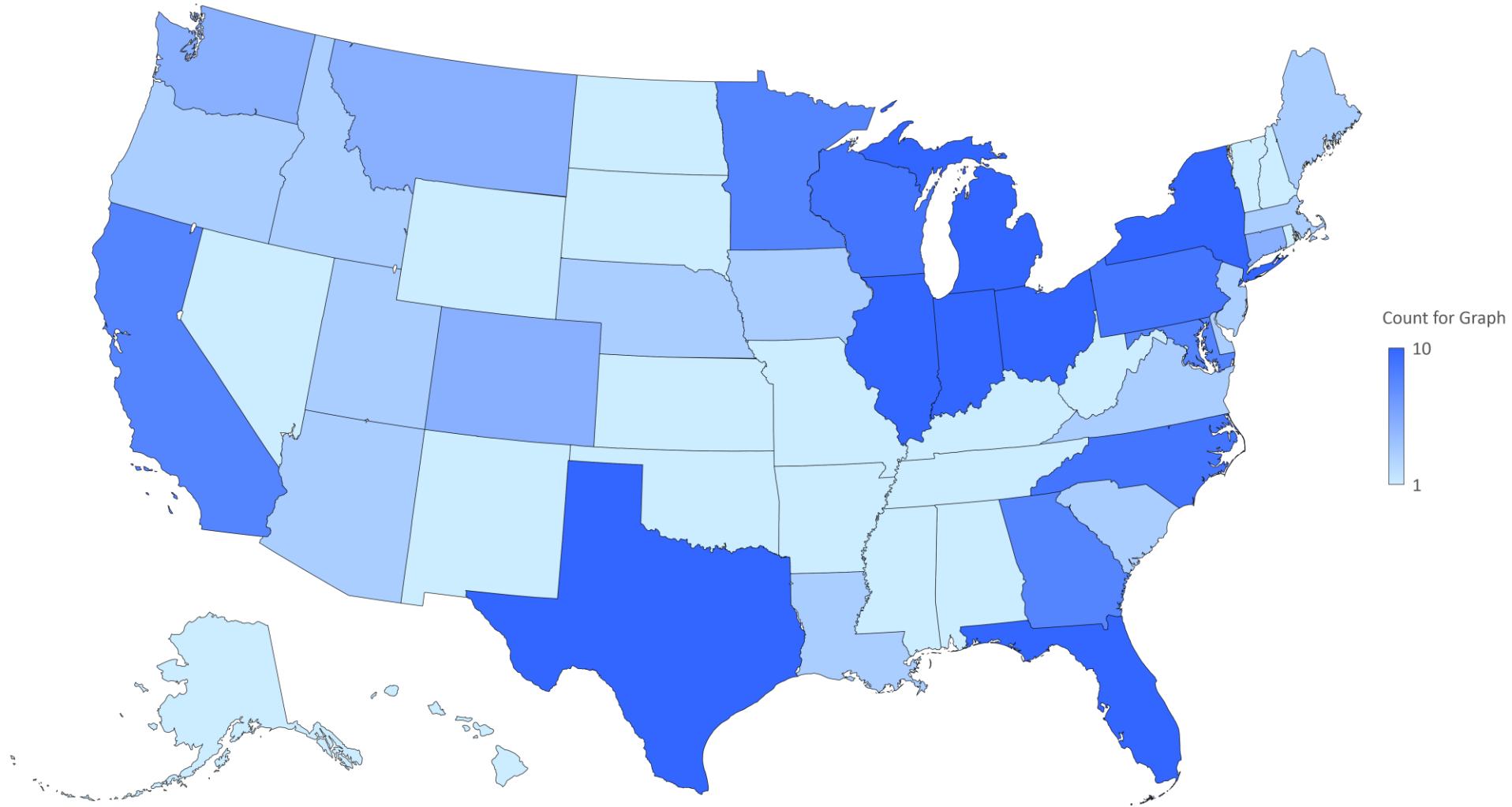
# Fracture Liaison Service

---

- Patient enrollment
  - Own The Bone registry
  - Low hanging fruit – hip fx
  - Leverage of EHR
  - Surgeon champion, reinforced by FLS coordinator

# Where We Are Today

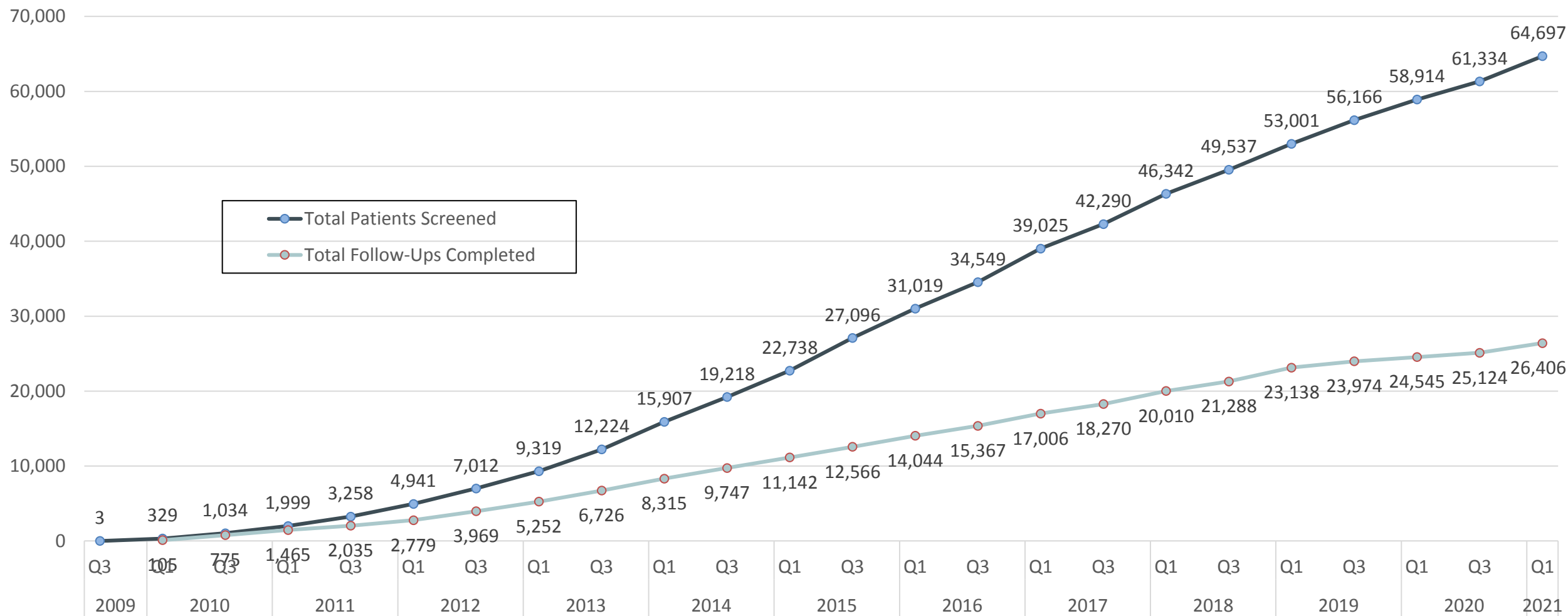
**272 sites recruited in all 50 states**



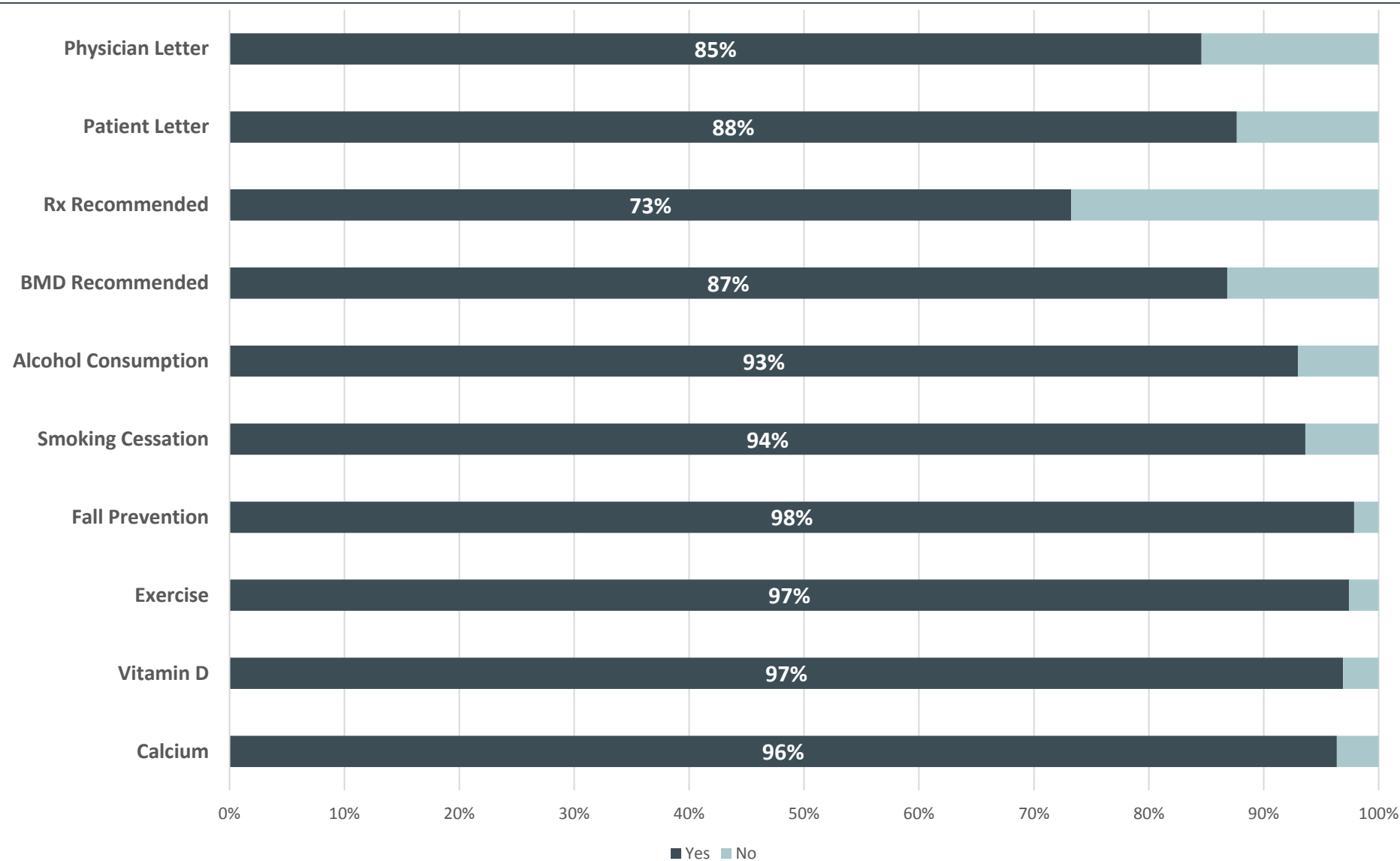
# Patient Enrollment

Recorded post-fracture osteoporosis management of over **64,000** patients

Through 1<sup>st</sup> Q 2021



# Site Compliance

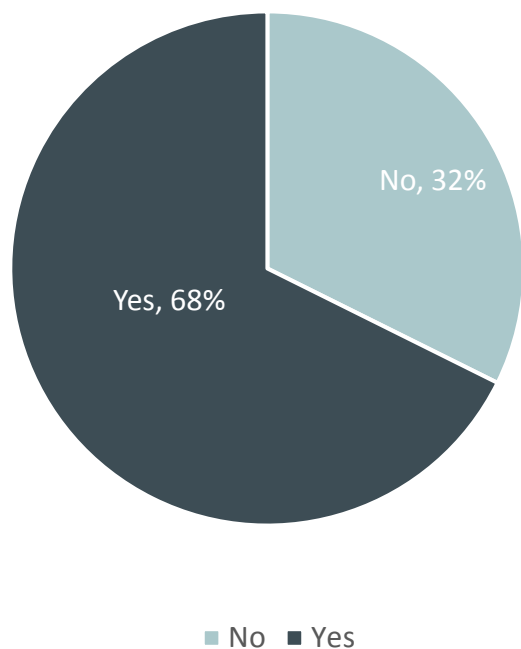


*Through 1<sup>st</sup> Q 2021*

# Rx Recommendations

Was new and/or continuation of previous pharmacologic therapy recommended to patient?

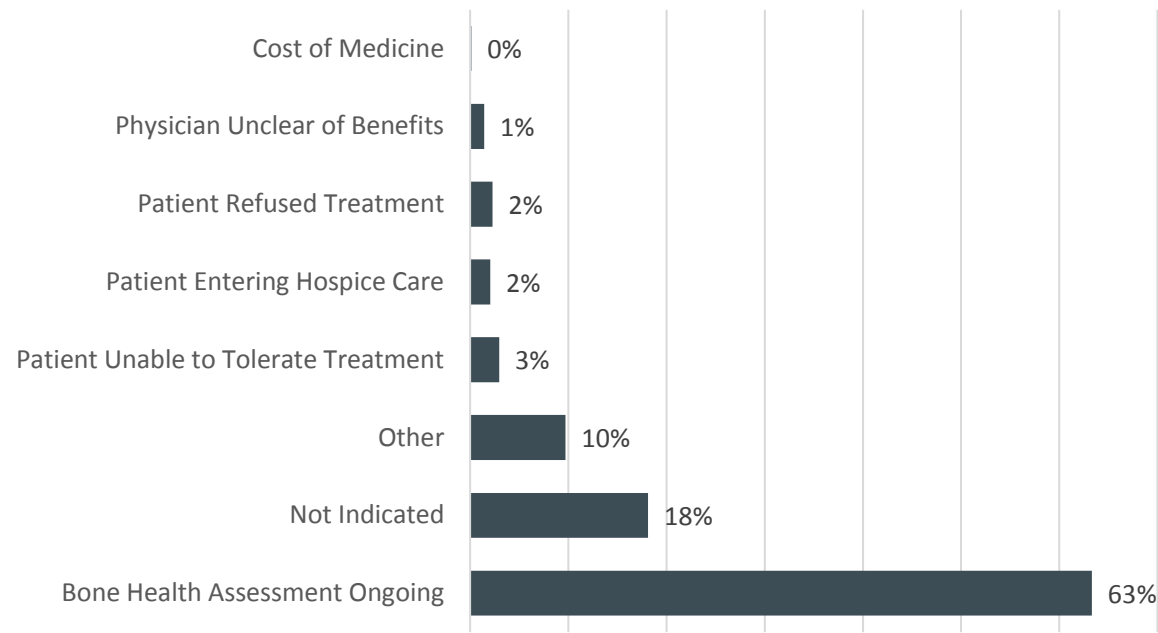
Through 1<sup>st</sup> Q 2021



■ No ■ Yes

N = 64,697

If no, check all that apply:

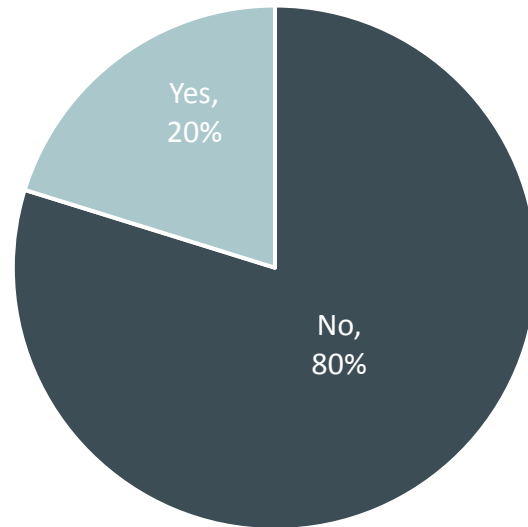


N = 21,216

# Rx Initiation

Was new and/or continuation of previous pharmacologic therapy initiated?

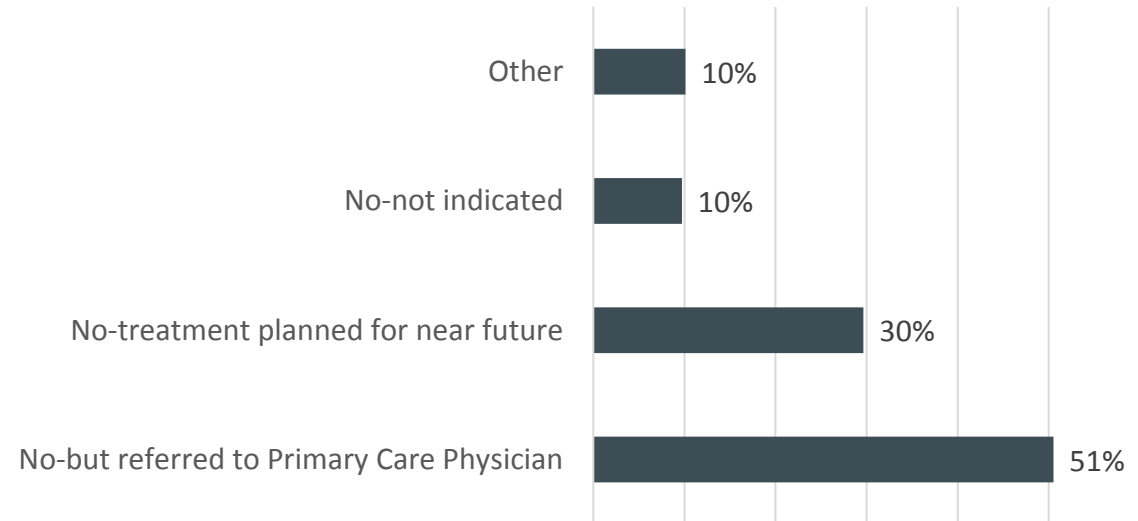
Through 1<sup>st</sup> Q 2021



■ No ■ Yes

N = 64,626

If no, please select one of the following:

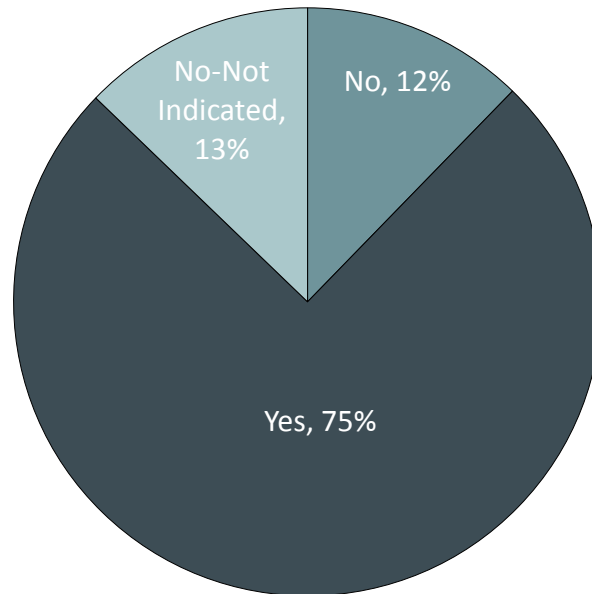


N = 51,733

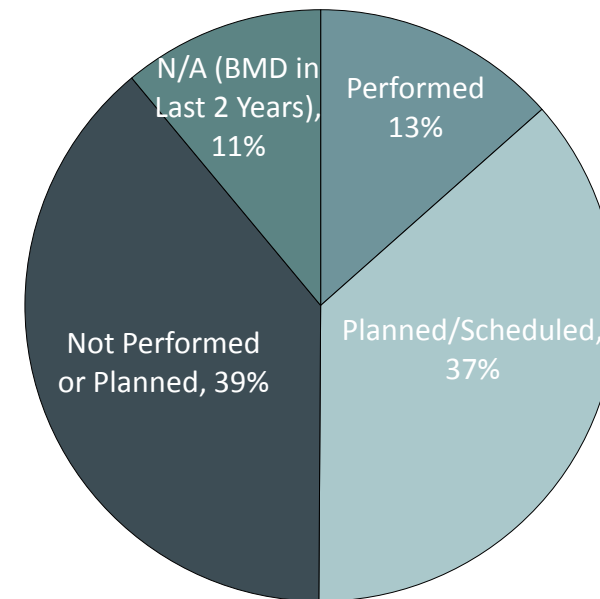
# BMD Testing

*Through 1<sup>st</sup> Q 2021*

Was BMD testing recommended to patient?

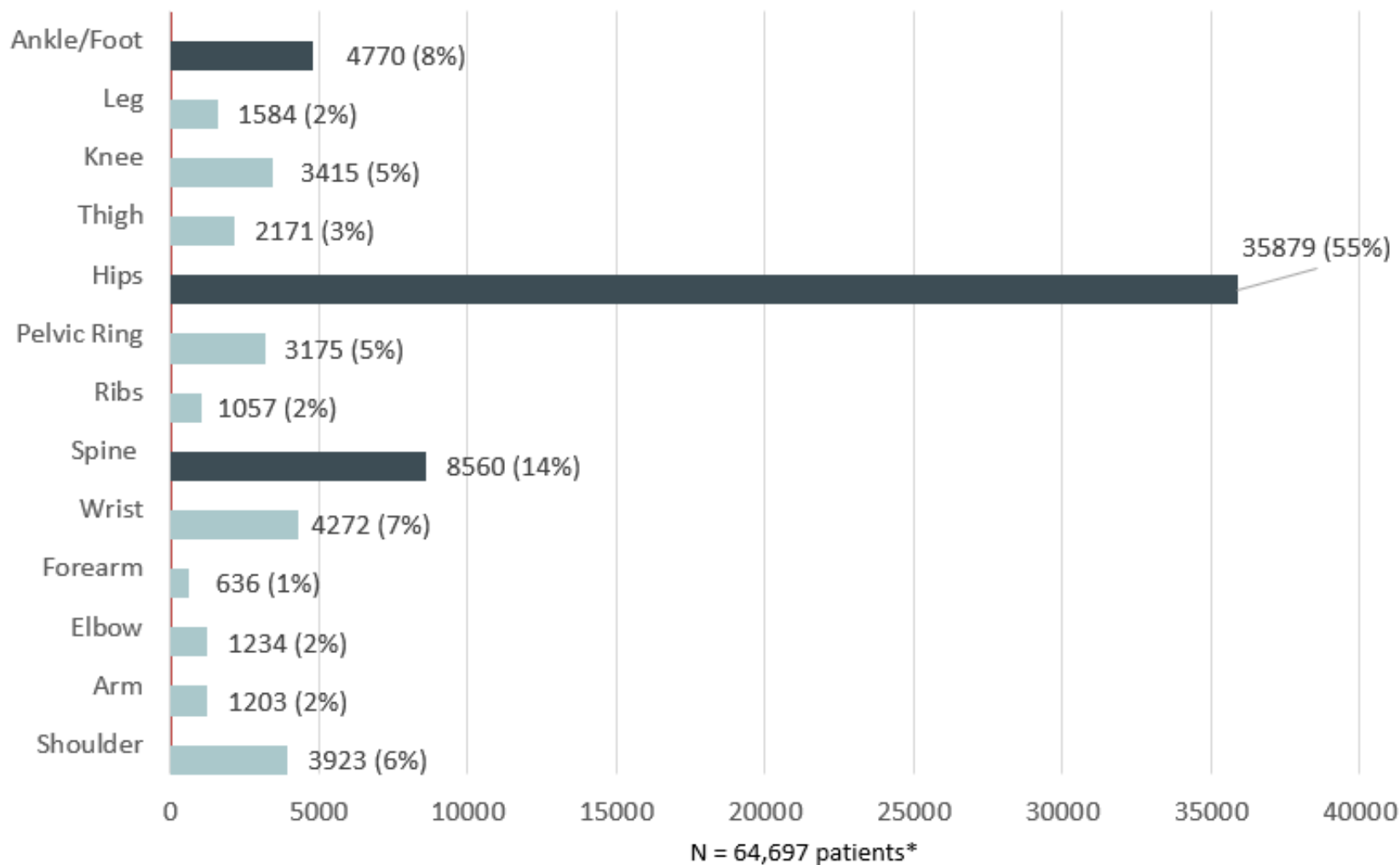


Was BMD testing performed or scheduled?





# Site of Fracture



Through 1<sup>st</sup> Q 2021

\*Multiple fractures can be recorded per patient; N = 71,879 fractures

AMERICAN ORTHOPAEDIC ASSOCIATION

**OWN THE  
BONE**

**Thank you!**